



Discovery Program

PI-Team Masters Forum 3
Working with the Discovery Program Office
Dennon Clardy

Three Programs... A Common Program Office



- Discovery Program was established in 1992
- New Frontiers Program was established in 2003
- D&NF PO assigned to MSFC August 2004
 - Capitalizes on MSFC's program/project management and systems engineering expertise
- Lunar Quest Program was approved in Feb 2010
- Management synergy exists within the Discovery, New Frontiers, and Lunar Quest (DNFLQ) Programs
 - Leverages program and robotic mission management experience
 - All the programs interact with common customers at the Science Mission Directorate (SMD) and eight NASA field centers

Discovery Program Office Goal

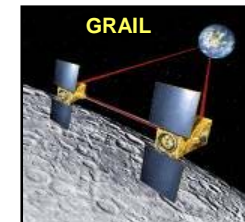
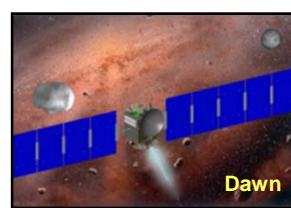
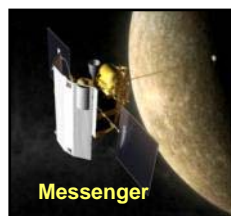
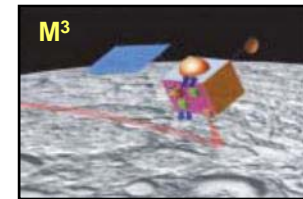


Goal

- Enhance the probability of mission success of Discovery Projects through independent oversight and insight through all phases of the mission life cycle utilizing a high-powered, effective, and efficient team

Success is.....

- Delivering Mission Science to the PI (meet the Level I requirements)
- Ensuring the implementing organization's success in delivering the spacecraft on cost and schedule (meet the launch date and cost cap)
- Meeting the program launch frequency for Science Missions



Philosophy in Accomplishing the Goal



Approach

- Shared partnership for mission success with Headquarters and project teams
- Right level of involvement to mitigate program risk

Relationships

- *Role*: Implement our role as a PO, while recognizing the responsibility and authority of the projects and institutions
- *Fairness*: Operate with integrity and fairness at all times with all parties
- *Trust*: We will approach new relationships with an attitude of trust
- *Respect*: Recognize the dedication and capability of the PI/project teams, especially during times of problems

Insight/Oversight Approach



- Implemented using a composite of independent review processes and program reporting and analysis approaches
 - Formal & informal lines of communication & reporting
 - Project life-cycle reviews
 - Risk management process
 - Financial reporting and inputs
- Depth of insight/oversight activity is based on the proportional severity of risks or areas of concern
 - Identify issues, risks, and areas of special concern
 - Assess level of program penetration required to handle
 - Balance against other program activities and priorities
 - Apply resources at required depth to work (if available and justified); modulate resource level & depth as severity of risk/concern evolves

Insight/oversight strategy based on *Risk-based Insight* concept

Discovery, New Frontiers, & Lunar Quest Program Office Organization



Discovery, New Frontiers, Lunar Quest Program Office
 Program Manager: Dennon Clardy
 D&NF Deputy Program Manager: Allen Bacskay
 LQ Deputy Program Manager: John McDougal
 Office Support Assistant: Sandra Nixon
 Program Coordinator: Mendy Danford

Program Integration Office
 Integration Manager: Bill Kahle
 Integration Analyst: Shelia Nash-Stevenson
 Integration Analyst: Jeri Briscoe
 Integration Analyst: Tom Hushka
 Schedule Analyst: Nate Porter
 Integration Engineer: Paul Galloway
 LQ Integration Support: Karen Stephens
 CM/DM Lead: Nancy Hill

Business Office
 Business Office Mgr.: Donna Patterson
 Program Analyst: Melissa Henderson
 Program Analyst: Stephanie Allen

Procurement Office
 Contract Officer/Mgr.: Melinda Dodson
 Contract Specialist: Belinda Triplett
 Contract Specialist: Vanessa Jones

Education & Public Outreach
 D&NF E&PO Lead: Shari Asplund/JPL
 LQ E&PO Lead: Brian Mitchell
 LQ E&PO Support: Stephanie Wilson

Program Technical Authority
 Lead Chief Engineer, D&NF: Judy Ballance
 Asst. Chief Engineer, D&NF: Mike Galuska
 Lead Chief Engineer, LQ: Bryan Barley

Program Safety & Mission Assurance
 S&MA Lead: Ruth Jones

Mission Managers

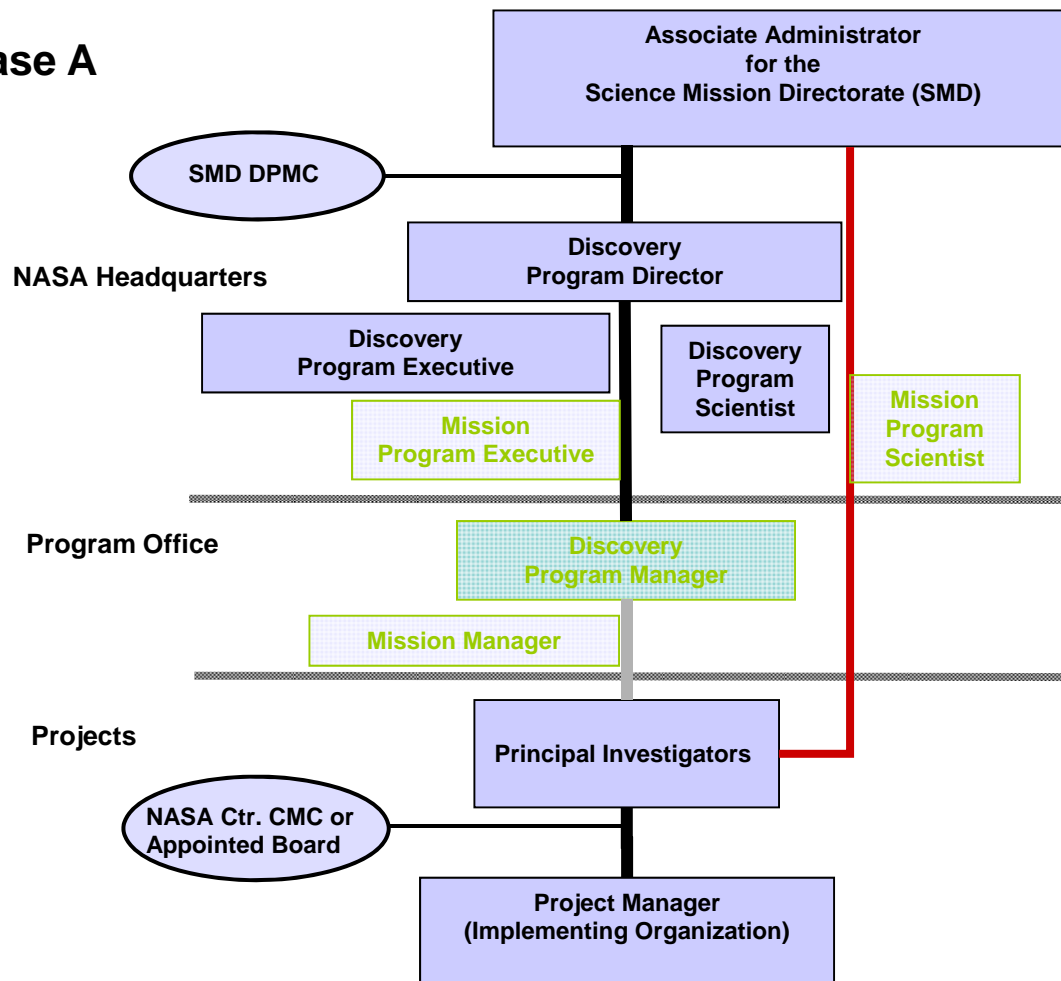
- Jimmy Lee
- Steve McClard
- Danny Harris
- Rick Turner
- Brian Key

- MESSENGER
- New Horizons
- Strofiio
- M³
- OSIRIS-REx
- RLLDt
- LRO Science Msn
- LADEE
- Dawn
- ASPERA-3
- GRAIL
- Juno
- Stardust-NExT
- EPOXI
- Discovery 10

Discovery Missions
 New Frontiers Missions
 Lunar Quest (LQ) Missions



Phase A



Phase A contracts are established through the Program Office, however this service is performed as a support function to the Program Scientist.

The Program Office has no other official role in the selection process.

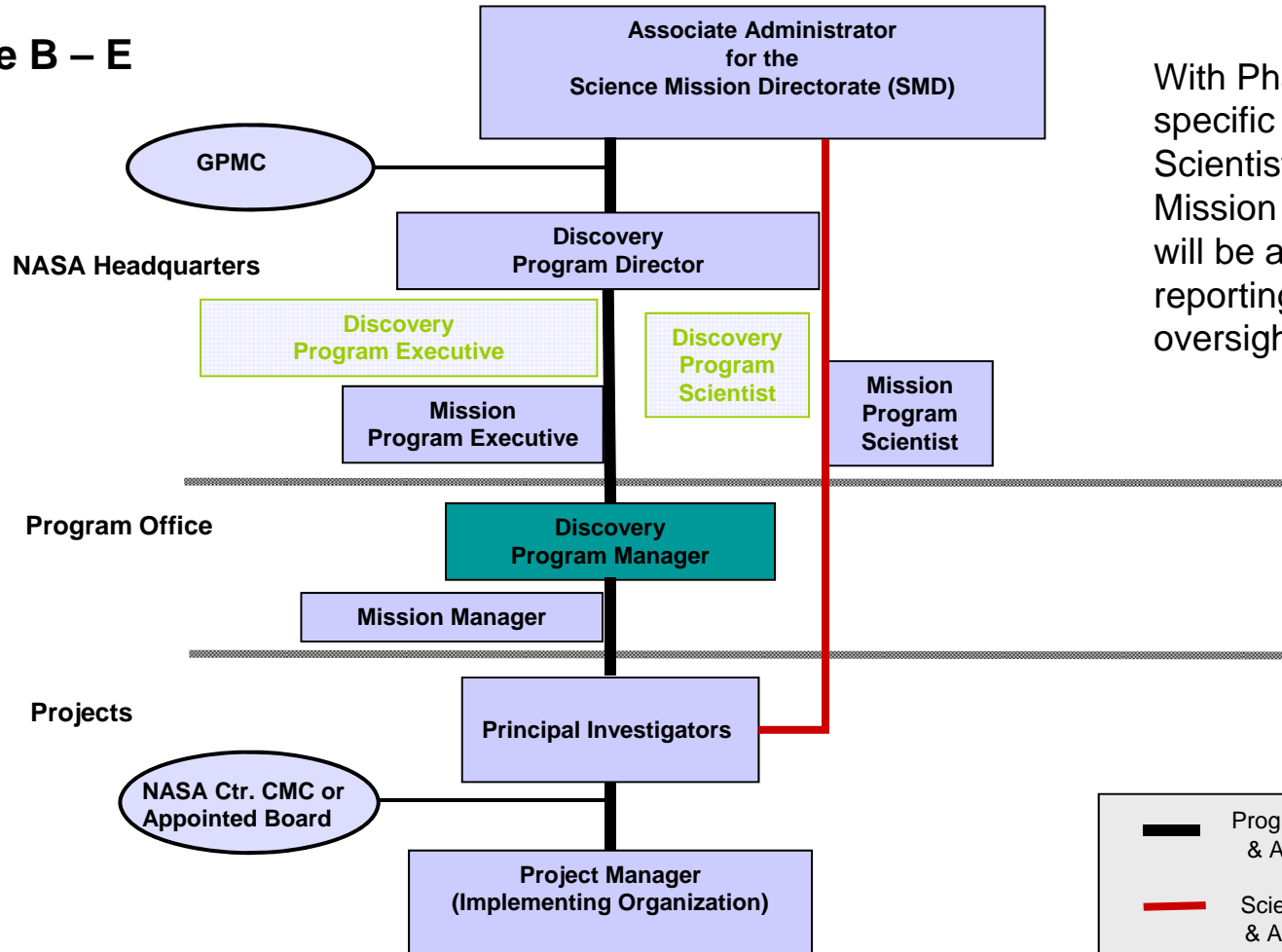
Mission Managers follow the Phase A process in preparation for Phase B



Program Structure- Phases B, C, D, E



Phase B – E



With Phase B, mission specific Program Execs & Scientists at NASA HQ and a Mission Manager at the PO will be assigned to assist the reporting, advocacy and oversight of the project.





The Program Office looks forward to
working with the selected project to
execute another successful Discovery
mission